

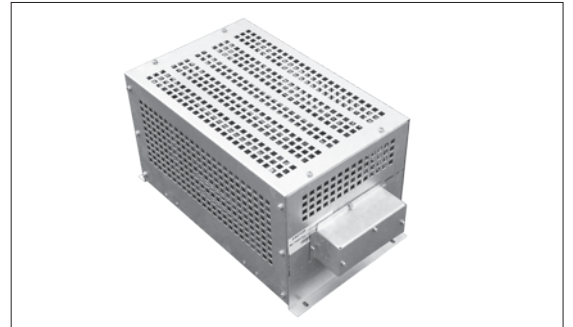
电热管电阻箱

Steel Tube Resistor Box

产品简述 (Product Profile)

电热管电阻箱，主要由电热管电阻器组装而成，适用于大功率，大电流的制动设备、轨道交通、新能源、实验测试设备、电梯、起重等变频器的能耗制动回路中。

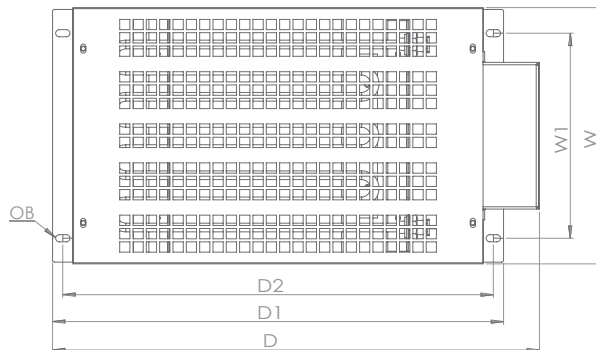
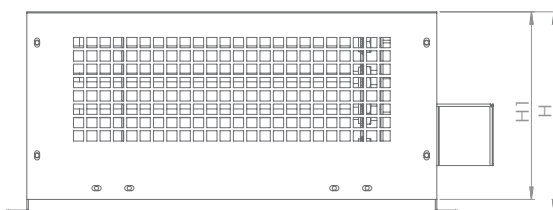
Steel Tube Resistor Boxes are mainly assembled by electrically heated tube resistors, applicable to the dynamic braking circuits in the inverters of high-power, high-current braking equipment, rail transportation, new energy, laboratory testing equipment, elevators, cranes, etc.



产品特点 (Product Features)

- | | |
|-----------------------|--|
| 1. 额定功率范围：1KW-10KW | 1. Rated power range: 1KW-10KW |
| 2. 工作电压范围：≤ 1.2KV | 2. Operating voltage range: ≤1.2KV |
| 3. 额定阻值范围：2R-1KR | 3. Rated resistance range: 2R-1KR |
| 4. 耐压范围：2.5KV 5S 50HZ | 4. Dielectric strength: AC2.5KV 50Hz/5s |
| 5. IP等级：IP20 | 5. IP rating: IP20 |
| 6. 振动：0.5g | 6. Vibration: 0.5g |
| 7. 温漂范围：≤400ppm/°C | 7. Temperature coefficient : ≤400ppm/°C |
| 8. 载流体材质：0Cr25Al5 | 8. Element material: 0Cr25Al5 |
| 9. 优势：可用于比较恶劣环境 | 9. Advantages : applicable to relatively harsh environment |

产品尺寸 (Product Size)

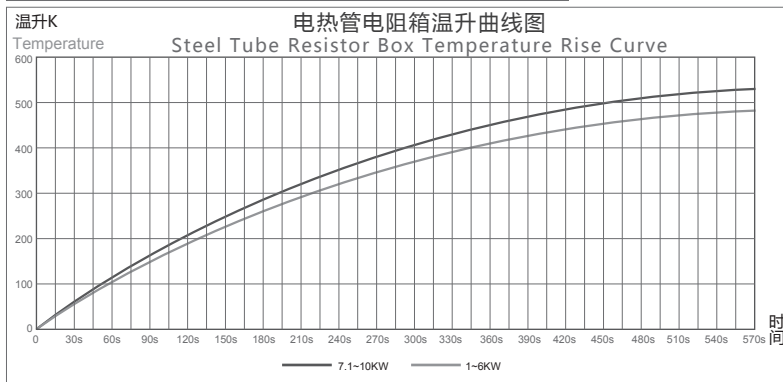
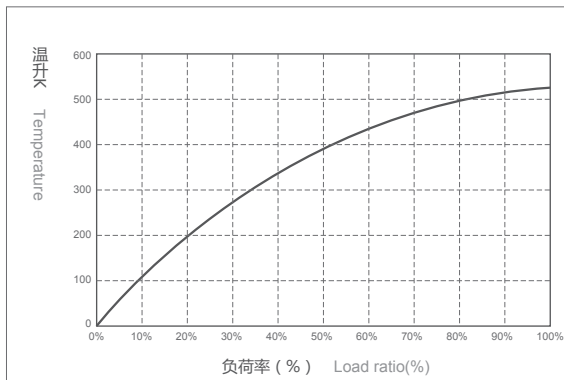


型号 Type	功率 Rated power(KW)	D	W	H	D1	D2	W1	H1	OB	阻值范围 Resistor range	配线 Cable (mm ²)	制动周期120s情况下，不同制动时间的制动功率 Braking power in different time each 120s			
												12s	24s	36s	48s
RTRB	1.5	475	250	90	440	420	200	80	7*14	3Ω-500Ω	4	17KW	8KW	5KW	4KW
	3	475	250	125	440	420	200	115	7*14	3Ω-500Ω	4	33KW	15KW	10KW	8KW
	4.5	475	250	160	440	420	200	150	7*14	3Ω-500Ω	4	50KW	23KW	15KW	12KW
	6	475	250	195	440	420	200	185	7*14	2Ω-1KΩ	6	66KW	30KW	20KW	15KW
	8	475	250	230	440	420	200	220	7*14	2Ω-1KΩ	6	77KW	39KW	26KW	20KW
	10	475	250	265	440	420	200	255	7*14	2Ω-1KΩ	10	97KW	49KW	33KW	24KW

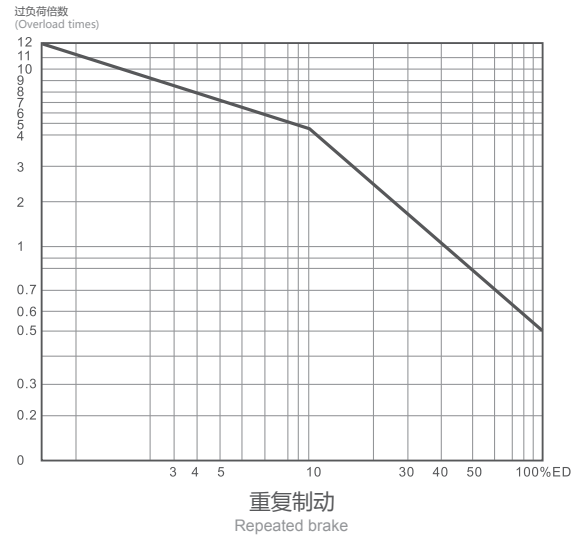
电气、机械特性 (Mechanical and Electrical Properties)

特性 Property	检查方法 Inspection method	性能要求 Requirement	试验标准 Test method
稳态湿热 Constant humidity-heat	40°C 相对湿度(90-95)% 96h Temperature 40°C, RH(90-95)% 96h	$R \leq \pm(5\% \pm 0.05\Omega)$	GB5729.2.24
温度快速变化 Temperature change	-55°C +55°C 3次循环 -55°C to +55°C, 3 Circes	$R \leq \pm(2\% \pm 0.05\Omega)$	GB5729.4.19
短时过负荷 Transient overload	10倍Pr 5S 10 Time Pr 5s	无可见损伤 No visible destruction $R \leq \pm(1\% \pm 0.05\Omega)$	GB5729.4.13
绝缘电阻 Insulation resistance	DC 1000V	$R \geq 100M\Omega$	GB5729.4.6
耐电压 Voltage resistibility	AC3000V 50Hz 5s	无击穿或飞弧 Free of breakage or flying arc	GB5729.4.7
负荷寿命 Life	25°C Ur 1000h	$R \leq 20\%$	
端子强度 Terminal strength	45N 30S	无可见损伤 Free of visible destruction	GB5729.4.16
耐振性 Vibration resistibility	f:5-200HZ a=1g X.Y.Z各2h	无可见损伤 $R \leq \pm(1\%R + 0.05\Omega)$ Free of visible destruction	GB5729.4.22

表面温升 (Surface Temperature Rise)



电阻器允许过负荷倍数 (Resistor Overload Capability)



成品识别码 (Product Identification Code)

